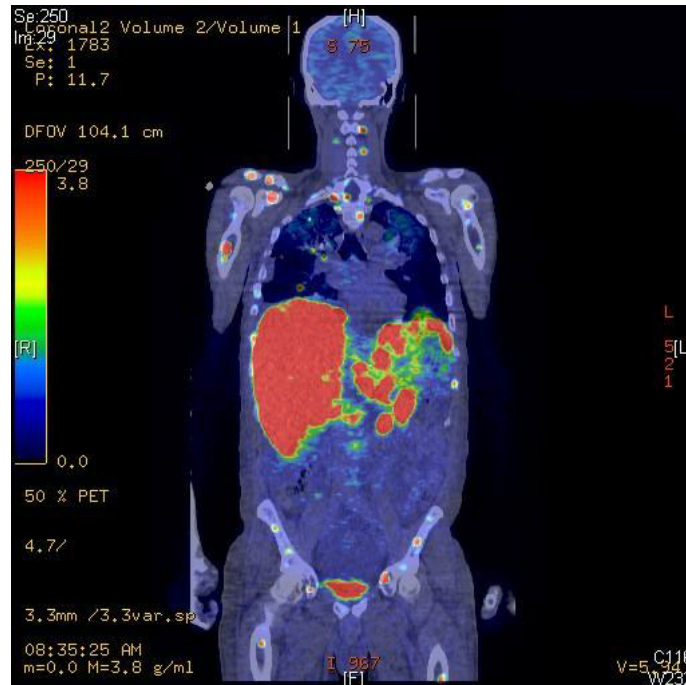


## Positron Emission Tomography (PET Scans)



What is PET?

Your physician has ordered a Positron Emission Tomography (PET) scan for you. PET images can provide important information about many conditions affecting the heart, brain, and other organs which will help your doctor plan appropriate treatment for you. PET images are different from the more conventional imaging such as X-Ray, CT, Ultrasound or MRI. These images contain information about tissue function and metabolism.

How Much Time Should I Allow?

You can expect to be in Nuclear Medicine for one and a half hours for your PET scan. The actual scan itself takes approximately 20 to 30 minutes.

How Does the Procedure Work?

To begin the procedure, a small amount of radioactive glucose is injected into your bloodstream. The Nuclear Medicine technologist will check your blood sugar before your injection using a finger-stick device.

There is no danger to you from this injection. Glucose (also known as sugar) is a common substance every cell in your body needs in order to function. Radioactive glucose must pass multiple quality control measures before it is used for any patient injection. The radiation exposure associated with PET is similar to that associated with a conventional CT scan. After the injection you will be asked to sit quietly, and in some cases instructed not to talk, for about 45 minutes while the glucose material circulates throughout your body. Then you will be asked to lie on a table that passes slowly through

the scanner. The scanner resembles a CT scanner but has a much larger opening. Most people fall asleep during the scan.

What should I do to Prepare?

For your comfort and peace of mind, please be sure to:

- Tell your doctor if you are pregnant or think you might be pregnant, or if you are a nursing mother, as you would with any other Nuclear Medicine procedure.
- Wear comfortable clothing.
- Tell your doctor if you are diabetic.
- Take any prescribed medications as usual on the day of your PET scan unless instructed not to do so.
- Avoid all beverages with caffeine and sugar.
- Avoid eating anything four hours prior to your schedule injection time.

How Will I Feel After the Scan?

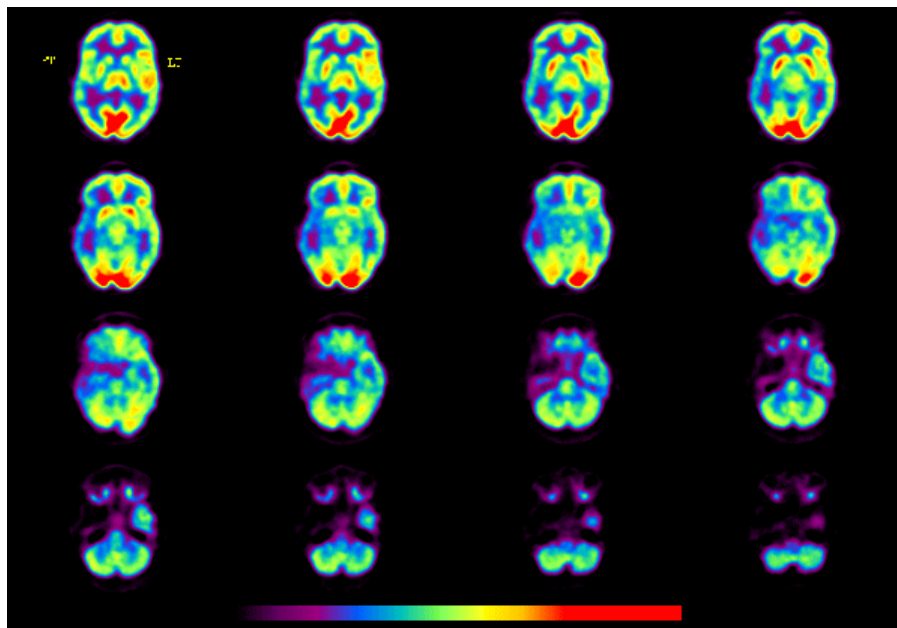
You should feel fine. There are no side effects from the injected tracer. If you have a heart scan, you may feel flushed afterwards.

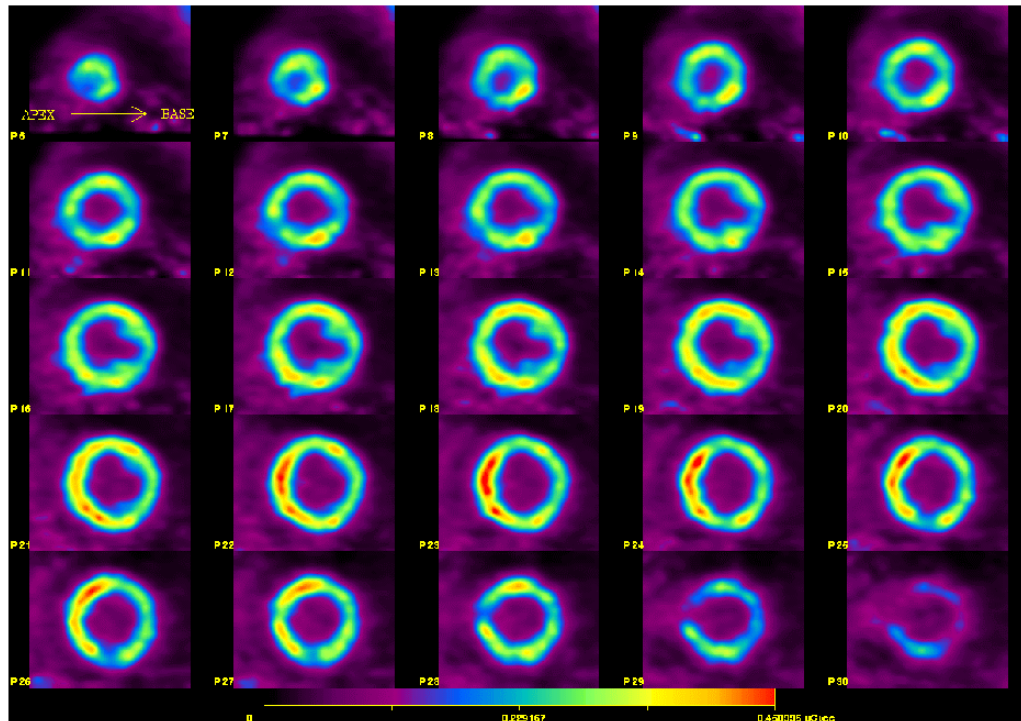
About the Scan

- Can be performed in about two hours as an inpatient or outpatient procedure
- During the scan you will be asked to lie very still

How Do I Get A PET Scan?

- Whole body PET scans can be ordered by any physician involved in your care
- The studies are interpreted shortly after the PET scan is completed and patients can expect reports to be available to their physicians the next day.





For more information about PET at the University of Kansas Hospital, check out our website at [www.rad.kumc.edu/nucmed/index.htm](http://www.rad.kumc.edu/nucmed/index.htm)